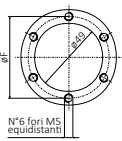
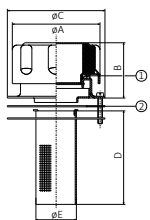




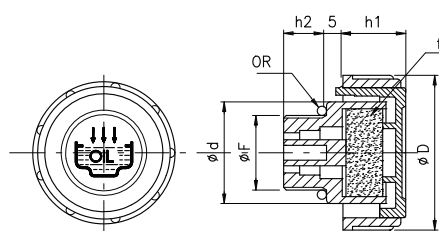
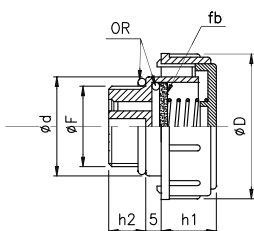
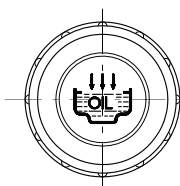
BOCCHETTONI CON TAPPO FILTRO ARIA CON CESTELLO ESTRAIBILE



BOCCHETTONI

Filtro aria		Fori fissaggio	Dimensioni						Codice	€
Filtrazione micron	Flusso raccomandato dm ³ /min		ØA	B	ØC	D	ØE	ØF		
40 spugna	700	6 M5	75	45	83	104	38	73	TR-2E	37,91
10 spugna	700	6 M5	75	45	83	104	38	73	TR-2S1E	39,11
10 carta	700	6 M5	75	45	83	104	38	73	TR-2P1E	40,58

TAPPI DI SFIATO



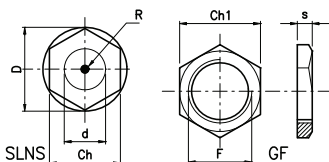
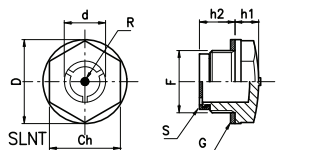
fb = Filtro in bronzo

f = Filtro aria

OR = O-Ring di tenuta

F	D	d	h1	h2	TAPPI DI SFIATO			TAPPI DI SFIATO CON FILTRO			TAPPI DI SFIATO CON FILTRO IN BRONZO SINTERIZZATO		
					Portata d'aria lt/min	Codice	€	Portata d'aria lt/min	Codice	€	Portata d'aria lt/min	Codice	€
G 3/8"	36	23	17	11	200	TMD-38	3,427	170	TMDF-38	4,049	93	TMDF-38/BR	6,693
G 1/2"	41	28	18	12	250	TMD-12	3,882	183	TMDF-12	46,113	100	TMDF-12/BR	7,363
G 3/4"	47	33	17	12	520	TMD-34	4,498	420	TMDF-34	5,114	230	TMDF-34/BR	8,039
G 1"	52	38	20	12	400	TMD-1	5,622	380	TMDF-1	6,352	260	TMDF-1/BR	9,504
G 1 1/4"	63	49	23	13		TMD-114	7,255	650	TMDF-114	8,039	130	TMDF-114/BR	11,472
G 1 1/2"	63	55	23	13,5		TMD-112	7,704	600	TMDF-112	8,433	130	TMDF-112/BR	11,807
M 14x1,5	41	28	17,5	12	225	TMD-14.15	3,882	183	TMDF-14.15	4,611	100	TMDF-14.15/BR	7,363
M 16x1,5	36	23	17	11	260	TMD-16.15	3,541	170	TMDF-16.15	4,049	93	TMDF-16.15/BR	6,693
M 18x1,5	41	28	17,5	12	170	TMD-18.15	3,654	170	TMDF-18.15	4,330	90	TMDF-18.15/BR	7,363
M 20x1,5	41	28	17,5	12	225	TMD-20.15	3,882	183	TMDF-20.15	4,611	100	TMDF-20.15/BR	7,363
M 22x1,5	41	28	17,5	12	225	TMD-22.15	3,990	183	TMDF-22.15	4,725	100	TMDF-22.15/BR	7,363

SPIE DI LIVELLO OLIO



Ch	F	D	d	h1	h2	Nm	Ch1	s	SLNS		SLNT	
									Cod.	€	Cod.	€
17	G 1/4"	20,5	12	8	8,50	5	n.d.	n.d.	SLNS/14	2,249		
18	G 3/8"	22	12	6,5	12	7	19	5	SLNS/38	2,081	SLNT/38	3,092
24	G 1/2"	28	16	8	12	15	27	5	SLNS/12	2,362	SLNT/12	3,427
30	G 3/4"	36	21	8,5	13,5	20	32	6	SLNS/34	3,206	SLNT/34	4,217
36	G 1"	42	30	9	14	25	36	6	SLNS/1	4,217	SLNT/1	5,341
42	G 1 1/4"	51	32	10	17	n.d.	46	6	SLNS/114	7,704	SLNT/114	7,817
50	G 1 1/2"	58	39	10	21	n.d.	n.d.	n.d.	SLNS/112	9,725	SLNT/112	10,066
64	G 2"	74	48	12	20	n.d.	n.d.	n.d.	SLNS/2	13,266	SLNT/2	13,439
17	M14x1,5	20	12	7,5	8	5	n.d.	n.d.	SLNS/14.15	2,362		
18	M16x1,5	22	12	6,5	12,5	7	n.d.	n.d.	SLNS/16.15	2,195	SLNT/16.15	3,206
21	M18x1,5	25,5	14	6	12,5	10	n.d.	n.d.	SLNS/18.15	2,530	SLNT/18.15	3,822
24	M20x1,5	28	16	7,5	12	15	n.d.	n.d.	SLNS/20.15	2,584	SLNT/20.15	3,936
24	M22x1,5	28	16	7,5	12,5	15	n.d.	n.d.	SLNS/22.15	3,038	SLNT/22.15	4,217
30	M26x1,5	36	21	8,5	13,5	20	n.d.	n.d.	SLNS/26.15	3,541	SLNT/26.15	4,498
30	M27x1,5	36	21	8,5	13,5	20	n.d.	n.d.	SLNS/27.15	4,498	SLNT/27.15	5,341
42	M40x1,5	51	32	10	17	n.d.	n.d.	n.d.	SLNS/40.15	8,039	SLNT/40.15	8,206

G = Guarnizione di tenuta

S = Schermo di contrasto

R = Punto rosso