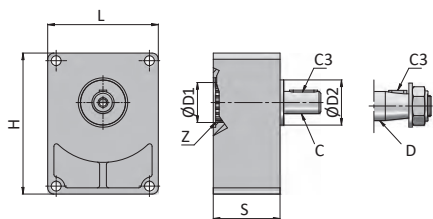




## SUPPORTI TIRO CINGHIA



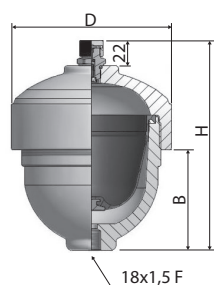
SUPPORTO TIRO CINGHIA										
Pompa	Ø D1	Z DIN 5482	Ø D2	Albero	C3	L	H	S	Codice	€
GR.1	25,4	Z14 - 25x22	50,8	C = Ø 18	6x6x25	75,0	93,0	40,0	SP-U1P	196,27
GR.2	36,5	Z14 - 25x22	36,5	C = Ø 18	6x6x30	89,4	114,0	54,5	SP-2	220,09
GR.3	50,8	Z16 - 35x31	50,8	C = Ø 24	8x7x40	123,5	153,2	52,0	SP-3	366,81
GR.1	25,4	Z14 - 25x22	50,8	D = 9,7 Conico 1:8	4x6,5	75,0	93,0	40,0	SP-U1PC	Richiesta
GR.2	36,5	Z14 - 25x22	36,5	D = 17,2 Conico 1:8	4x6,5	89,4	114,0	54,5	SP-2C	Richiesta
GR.3	50,8	Z16 - 35x31	50,8	D = 22,2 Conico 1:8	4x7,5	123,5	153,2	52,0	SP-3C	Richiesta

## LANTERNE E GIUNTI



Motore 4 poli 1450 giri/min.			Pompa	Lanterna		Dimensione lanterna (mm)			Giunto completo					Inserito elastico ricambio		
kW	Taglia	HP		Tipo	Codice	€	A	G	P	H	D	d	a	Codice	€	Codice
0,25 ÷ 0,37	71	0,35 ÷ 0,55	05 M	LS160	39,241	160	70	M8	64	14	6 cil.	48	ND1	28,175	R-42	3,752
			U 1 P	LS161	39,241	160	70	M8	62	14	9,7 con. 1:8	48	ND2	28,175	R-42	3,752
0,55 ÷ 0,75	80	0,75 ÷ 1	05 M	LS210	43,725	200	87	M10	81	19	6 cil.	48	ND4B	49,195	R-42	3,752
			U 1 P	LS211	43,725	200	87	M10	78	19	9,7 con. 1:8	48	ND5A	49,195	R-42	3,752
1,1 ÷ 1,5	90	1,5 ÷ 2	2	LS203	46,714	200	95	M10	87	19	17,2 con. 1:8	65	ND7	41,722	R-62	6,392
			U 1 P	LS201	43,725	200	95	M10	87	24	9,7 con. 1:8	48	ND70A	30,782	R-42	3,752
			U 1 P	LS201	43,725	200	95	M10	87	24	9,7 con. 1:8	65	ND8	42,071	R-62	6,392
			2	LS203	46,714	200	95	M10	87	24	17,2 con. 1:8	65	ND10	42,071	R-62	6,392
2,2 ÷ 4	100 ÷ 112	3 ÷ 5,5	U 1 P	LS250	62,773	250	105	M12	97	28	9,7 con. 1:8	65	ND11	46,205	R-62	6,392
			2	LS252	62,773	250	105	M12	97	28	17,2 con. 1:8	65	ND13	46,205	R-62	6,392
			2	LS253	68,020	250	115	M12	107	28	17,2 con. 1:8	65	ND61	50,308	R-62	6,392
			3 U	LS255	68,020	250	115	M12	107	28	22,2 con. 1:8	65	ND61C	50,308	R-62	6,392
			2	LS253	68,020	250	115	M12	107	28	17,2 con. 1:8	86	ND14	73,649	R-82	9,381
			3 U	LS255	68,020	250	115	M12	107	28	22,2 con. 1:8	86	ND15	73,649	R-82	9,381
5,5 ÷ 9	132	7,5 ÷ 12	2	LS300	107,261	300	143	M12	135	38	17,2 con. 1:8	86	ND16	92,029	R-82	9,381
			3 U	LS302	107,261	300	143	M12	135	38	22,2 con. 1:8	86	ND17	92,029	R-82	9,381
			35 U	LS306	110,251	300	143	M12	135	38	25,6 con. 1:8	108	ND18C	128,790	R-103	13,133
11 ÷ 15	160	15 ÷ 20	2	LS350	206,287	350	178	M16	168	42	17,2 con. 1:8	108	ND43A	159,191	R-103	13,133
			3 U	LS352	206,287	350	178	M16	168	42	22,2 con. 1:8	108	ND43C	159,191	R-103	13,133
			35 U	LSE356	291,860	350	186	M16	176	42	25,6 con. 1:8	108	ND21	170,861	R-103	13,133
			4 U	LSE358	366,241	350	186	M16	176	42	33,3 con. 1:8	108	ND22	170,861	R-103	13,133
18,5 ÷ 22	180	25 ÷ 30	3 U	LS352	206,287	350	178	M16	168	48	22,2 con. 1:8	108	ND44C	181,737	R-103	13,133
			35 U	LSE356	291,860	350	188	M16	176	48	25,6 con. 1:8	108	ND25	193,408	R-103	13,133
			4 U	LSE358	366,241	350	188	M16	176	48	33,3 con. 1:8	108	ND26	193,408	R-103	13,133

## ACCUMULATORI IDROPNEUMATICI A MEMBRANA



ACCUMULATORI IDROPNEUMATICI A MEMBRANA - PRESS. MAX 300 BAR - PRECARICA N2 MAX 210 BAR							
Volume azoto	H	D	B	Portata max	Peso	Codice	€
Lt.	mm	mm	mm	Lt/min	Kg		
0,12	151	53	130	45	1,6	HST0.12	Richiesta
0,15	141	80	94	45	2,5	HST0.15	
0,35	152	101	100	50	4	HST0.35	
0,50	175	124	120	60	5,5	HST0.5	
0,70	218	100	80	55	5,5	HST0.7	
0,80	185	138	85	60	6,3	HST0.8	
1,50	270	138	160	55	8,9	HST1.5	
2,30	340	138	165	55	11,5	HST2.3	